

PERSPECTIVE SECTION

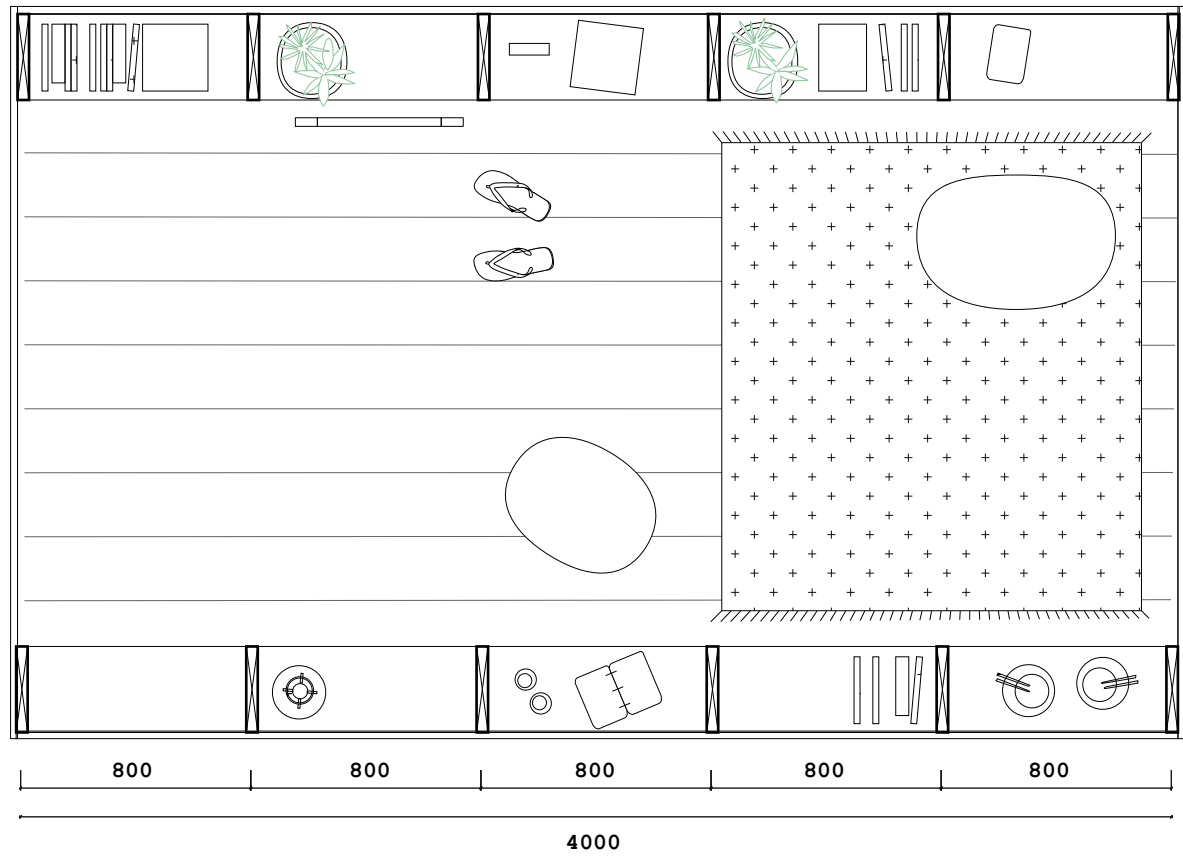
PROJECT DESCRIPTION

"...è il luogo interno dove è situato tutto ciò che forma il proprio mondo."
Bruno Munari

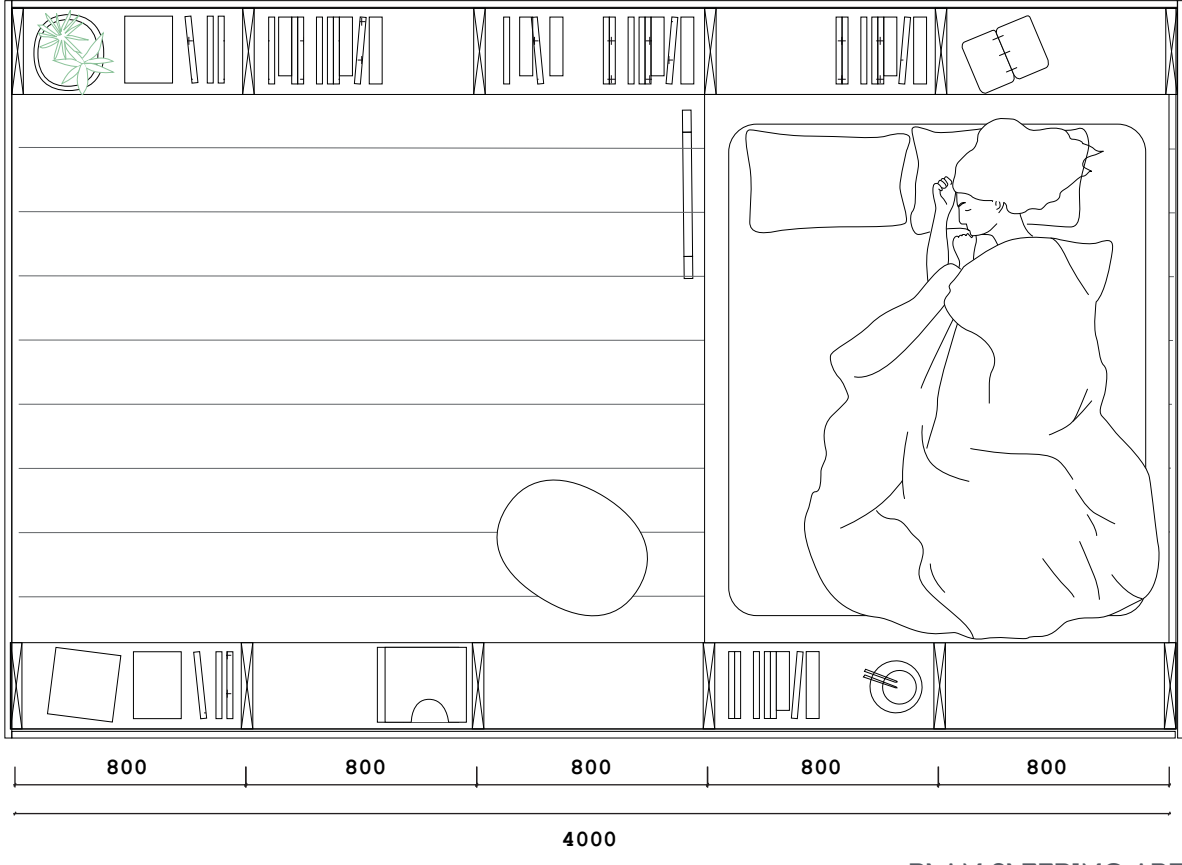
Home is not simply a house, but rather the dwellers' experiences in it, their memories and spaciouly their personal belongings. The things we carry is a project that examines the questions of what makes a house a home and how in the essential structure the temporarily character of a shelter can be overcome and one can experience the true comfort and hospitality of a real home. We create a shelter with a soul, or more-over with the soul of its user - a space where the users place their belongings in a grid structure and the belongings themselves are the ones shaping the environment. In that way the shelter has different character depending on the identity of each dweller.

The shelter occupies exactly 10sqm with its 2.5 by 4.0 meters size. The space is designed with maximum flexibility and usability. The first level, while closed, is be divided into two zones with different characters - one more spacious, with a high ceiling of 3.1 meters and another more secluded one that can be used for hosting two more people in case of necessity. In that way the shelter can host a total number of four people, while still providing additional functions. The feeling of openness is advanced by the 360° open view. In that way the interior expands in the surroundings, providing high quality living conditions, occupying minimum site area. When opened, the first level is rather fluid and multifunctional. It can serve as an open platform for the interests of the user, hosting different activities - art fair, exhibition space, open bar, bookswapping, library, second-hand shop, etc. The second semi-level is the private area of the shelter, where the double bed is placed. It is all closed to the outside, creating a feeling of protection and comfort.

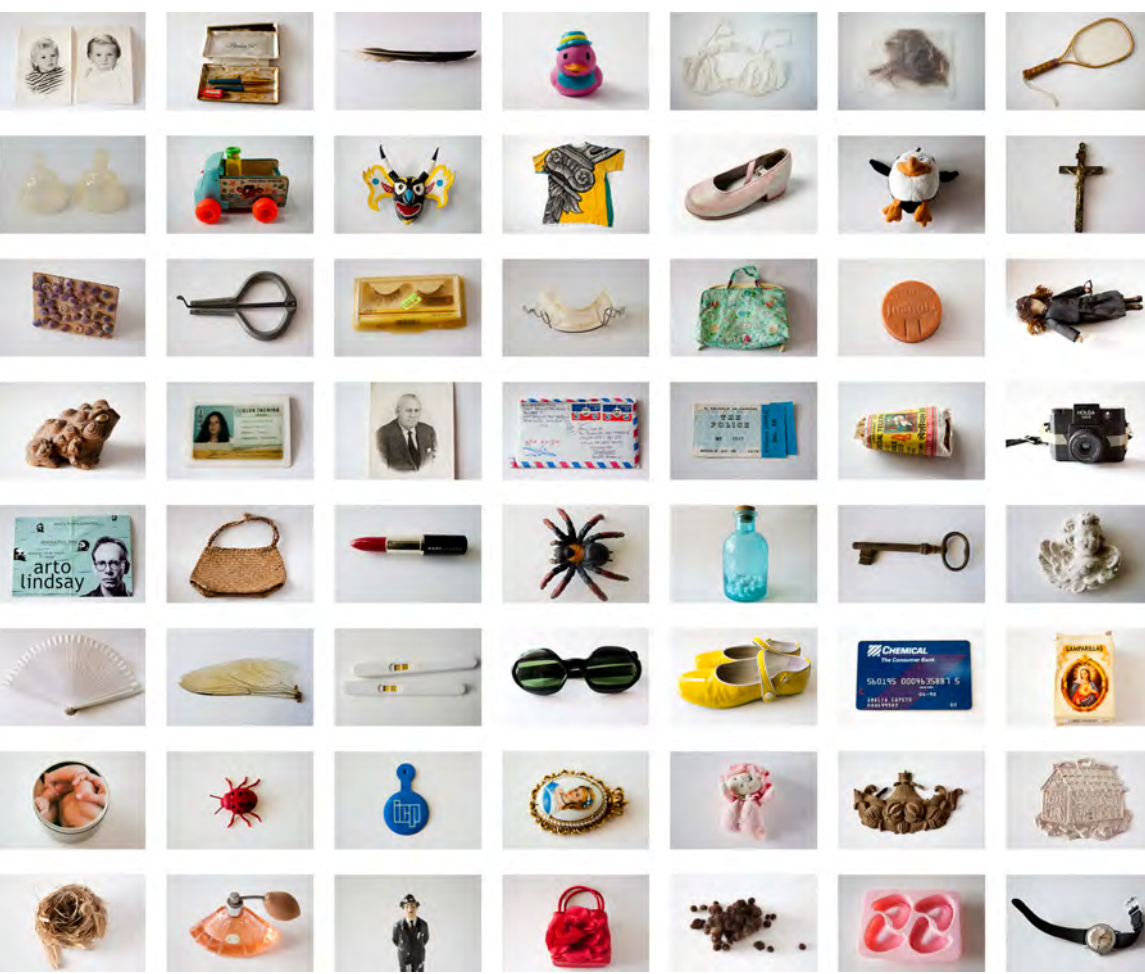
The structure is consisted of six timber frames with the size of 2.5 by 3.3 meters, connected with horizontal beams. The used profile is 5x30cm, providing space for the interior shelves as well as for the mobility system below. The cover in the solid parts is made by plywood panels, while in the transparent part - with plastic sheets. The whole structure is carried on six twenty-centimeters wheels, partially covered by the plywood sheets. The timber was chosen as main material as it answers the sustainability goals, while



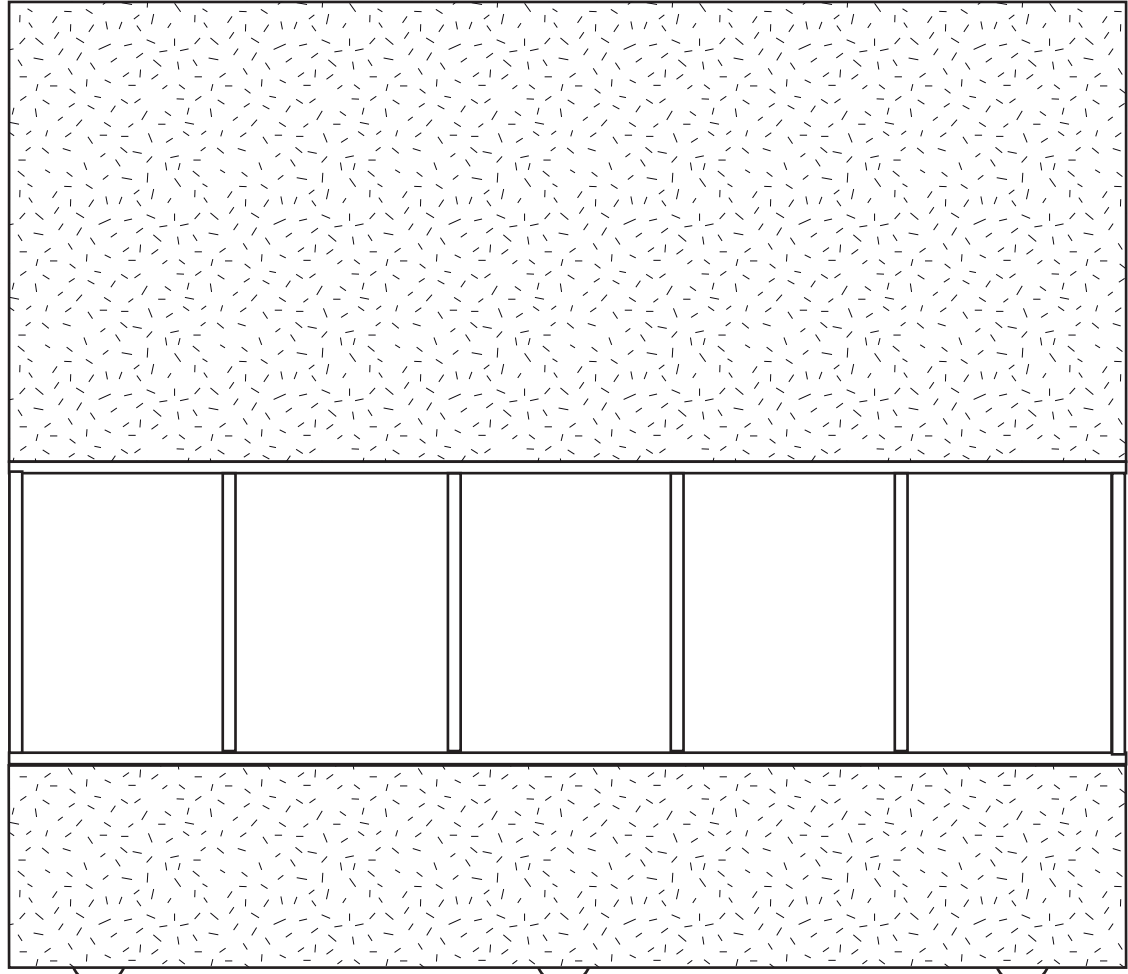
PLAN LIVING AREA



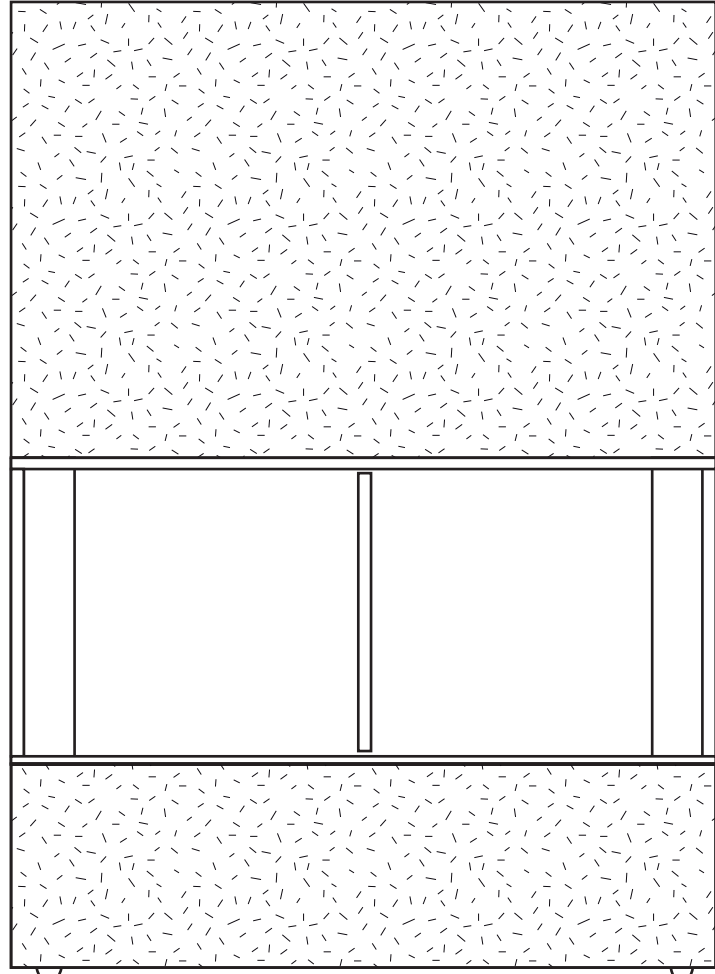
PLAN SLEEPING AREA



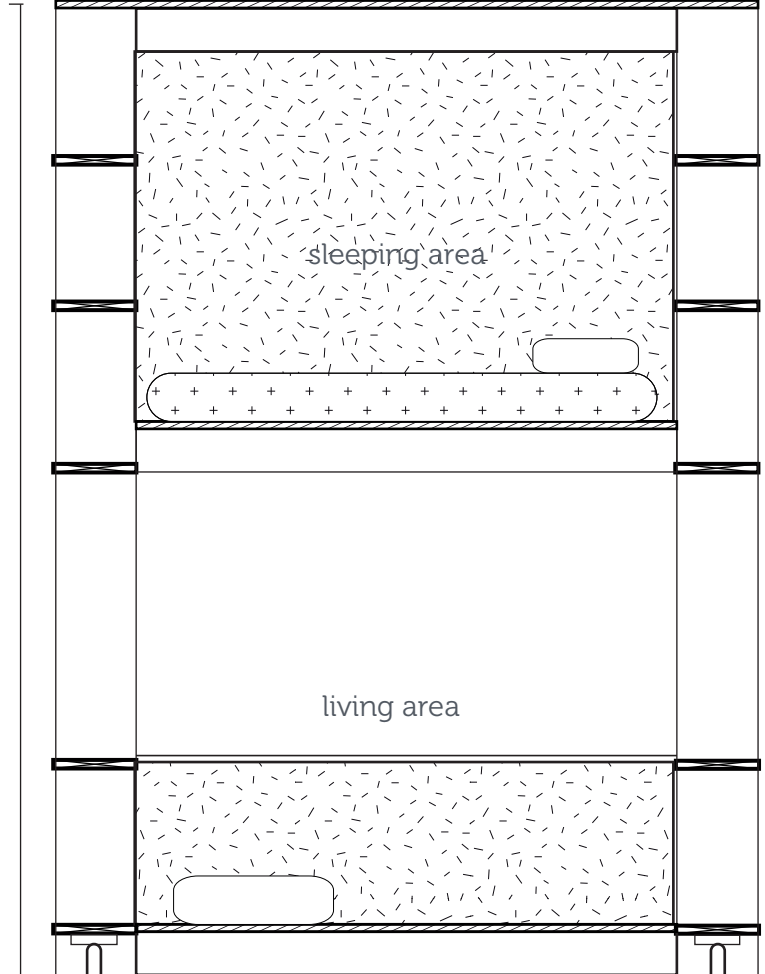
CONCEPT IMAGE " THE THINGS WE CARRY "



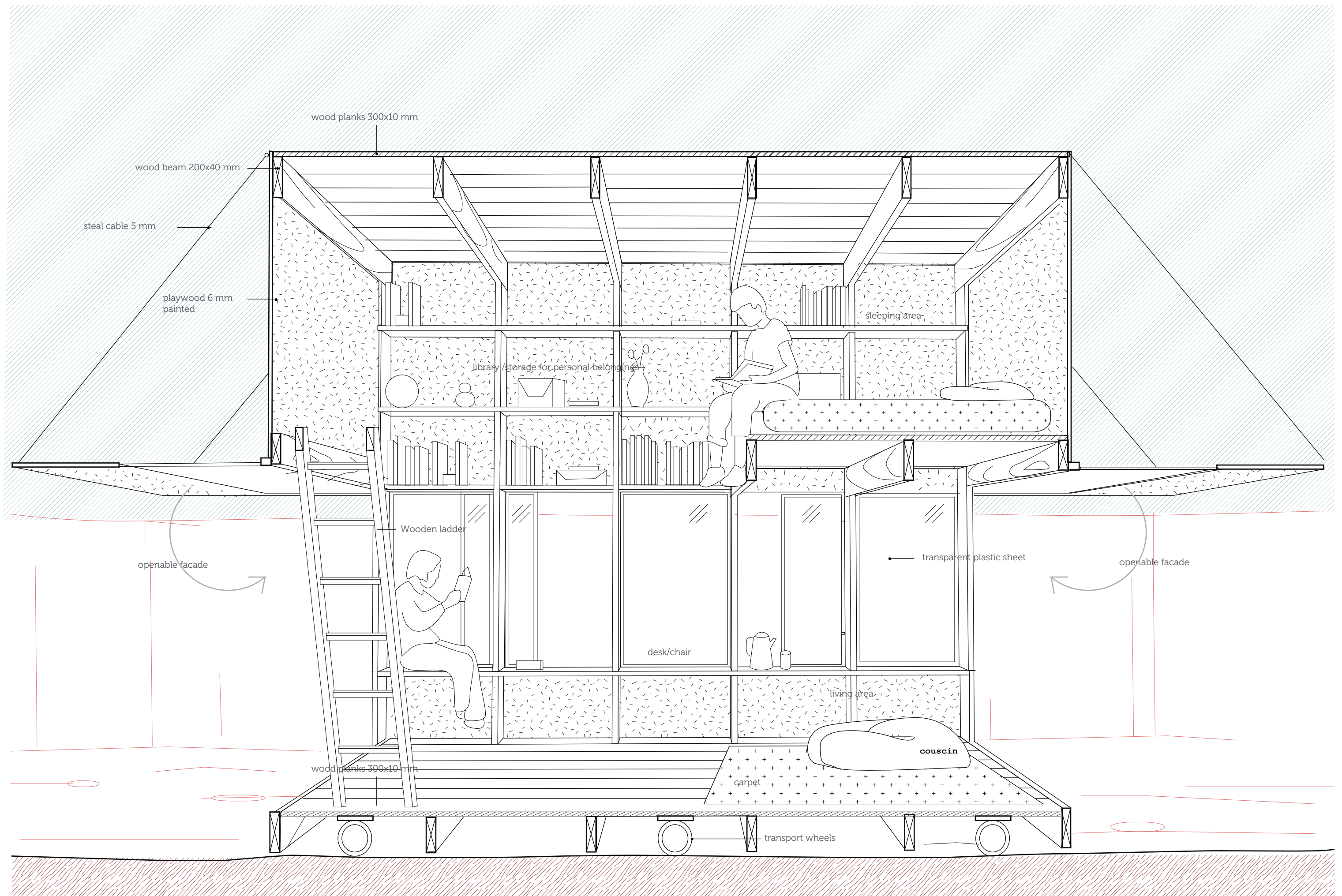
ELEVATION 01

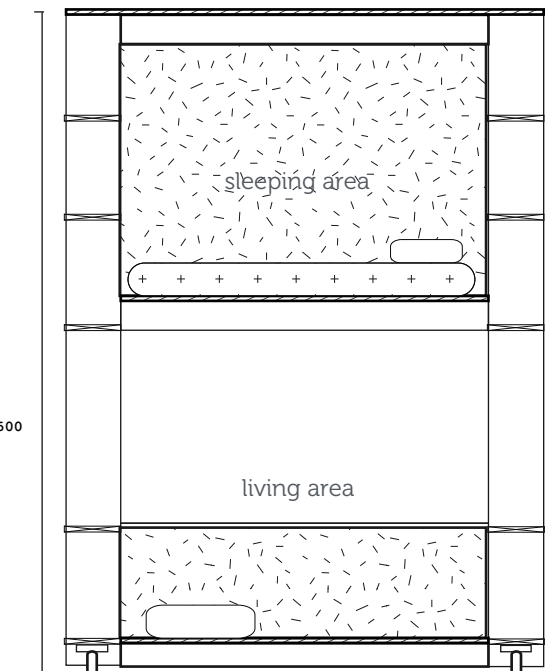
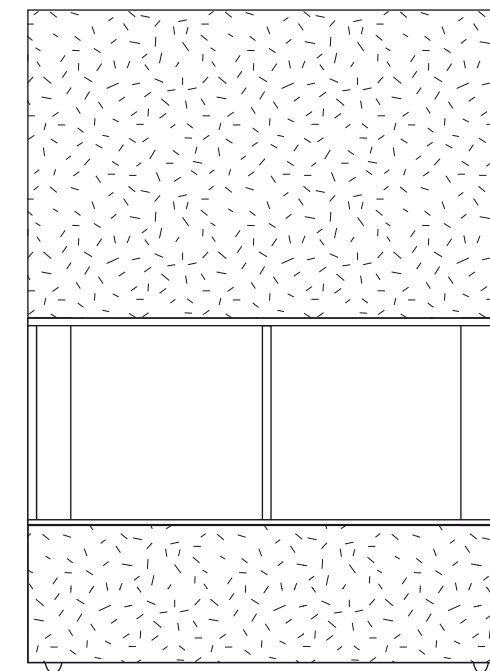
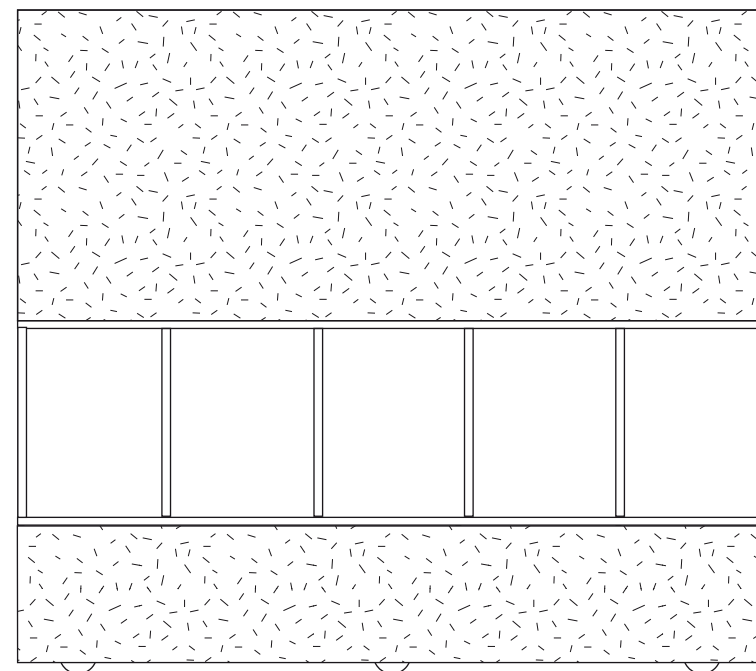
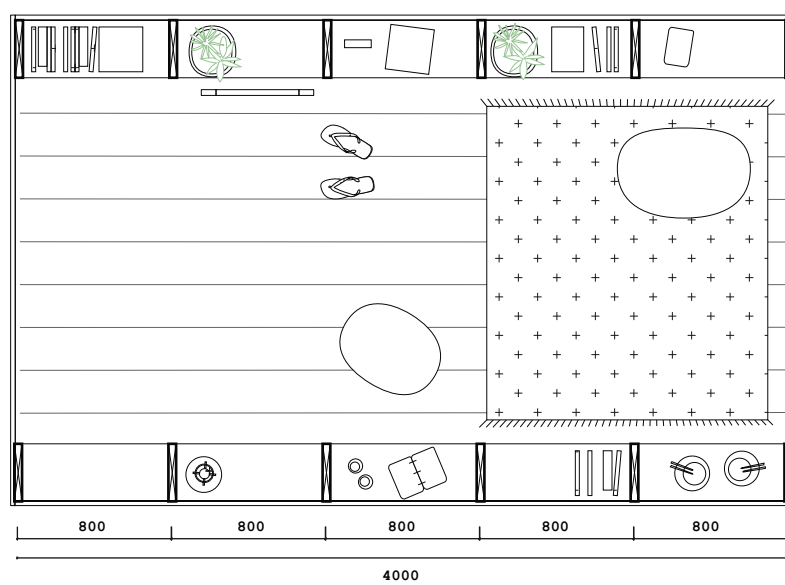
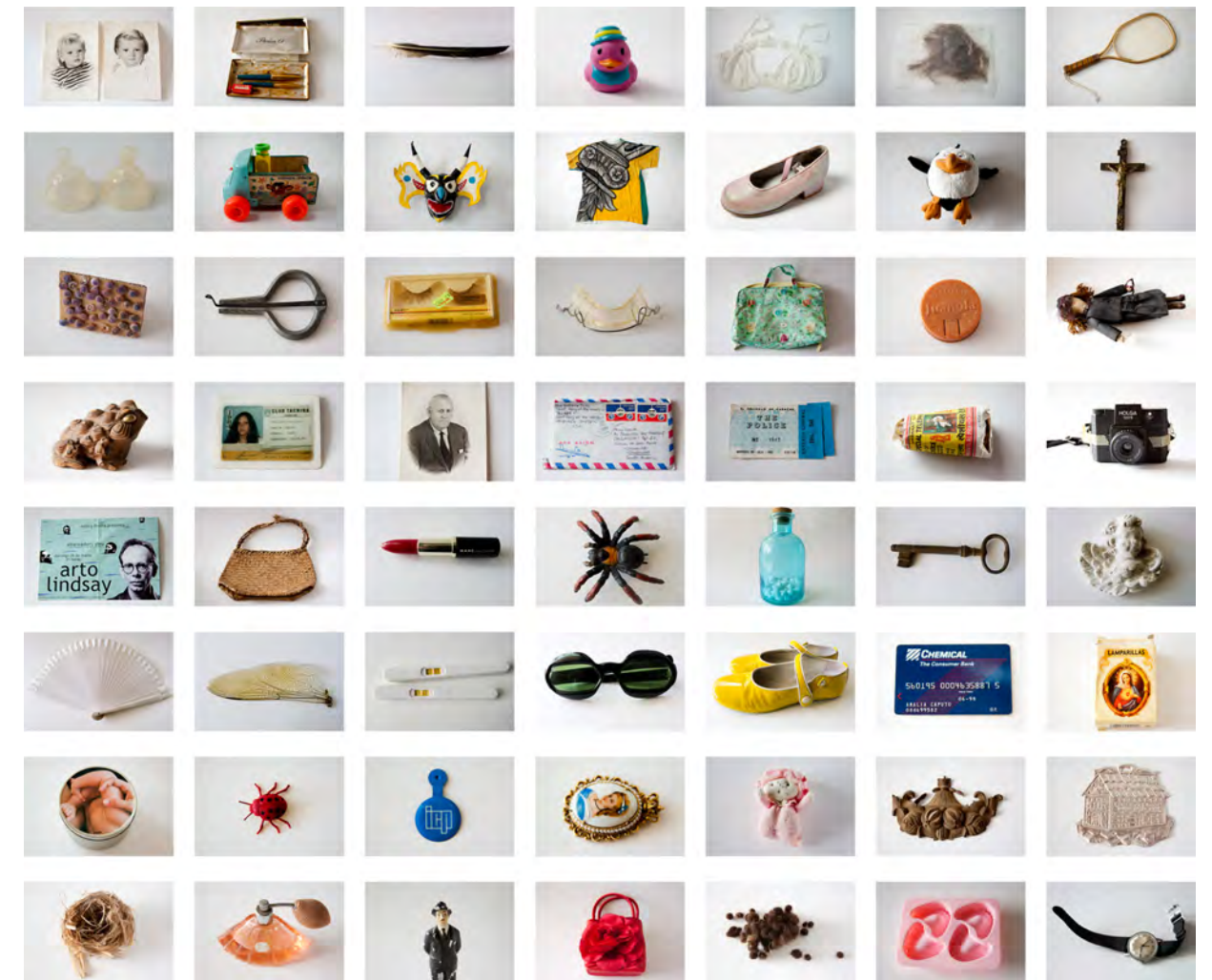


ELEVATION 02



SECTION





Giuria

"...è il luogo interno dove è situato tutto ciò che forma il proprio mondo."

Bruno Munari

Home is not simply a house, but rather the dwellers' experiences in it, their memories and spaciouly their personal belongings. *The things we carry* is a project that examines the questions of what makes a house a home and how in the essential structure the temporarily character of a shelter can be overcome and one can experience the true comfort and hospitality of a real home. We create a shelter with a soul, or moreover with the soul of its user - a space where the users place their belongings in a grid structure and the belongings themselves are the ones shaping the environment. In that way the shelter has different character depending on the identity of each dweller.

The shelter occupies exactly 10sqm with its 2.5 by 4.0 meters size. The space is designed with maximum flexibility and usability. The first level, while closed, is divided into two zones with different characters - one more spacious, with a high ceiling of 3.1 meters and another more secluded one that can be used for hosting two more people in case of necessity. In that way the shelter can host a total number of four people, while still providing additional functions. The feeling of openness is advanced by the 360° open view. In that way the interior expands in the surroundings, providing high quality living conditions, occupying minimum site area. When opened, the first level is rather fluid and multifunctional. It can serve as an open platform for the interests of the user, hosting different activities – art fair, exhibition space, open bar, bookswapping, library, second-hand shop, etc. The second semi-level is the private area of the shelter, where the double bed is placed. It is all closed to the outside, creating a feeling of protection and comfort.

The structure is consisted of six timber frames with the size of 2.5 by 3.3 meters, connected with horizontal beams. The used profile is 5x30cm, providing space for the interior shelves as well as for the mobility system below. The cover in the solid parts is made by plywood panels, while in the transparent part – with plastic sheets. The whole structure is carried on six twenty-centimeters wheels, partially covered by the plywood sheets. The timber was chosen as main material as it answers the sustainability goals, while keeps the durability and low cost character of the project.

Rete

"...è il luogo interno dove è situato tutto ciò che forma il proprio mondo."

Bruno Munari

Home is not simply a house, but rather the dwellers' experiences in it, their memories and spaciouly their personal belongings. *The things we carry* is a project that examines the questions of what makes a house a home and how in the essential structure the temporarily character of a shelter can be overcome and one can experience the true comfort and hospitality of a real home. We create a shelter with a soul, or moreover with the soul of its user - a space where the users place their belongings in a grid structure and the belongings themselves are the ones shaping the environment. In that way the shelter has different character depending on the identity of each dweller.