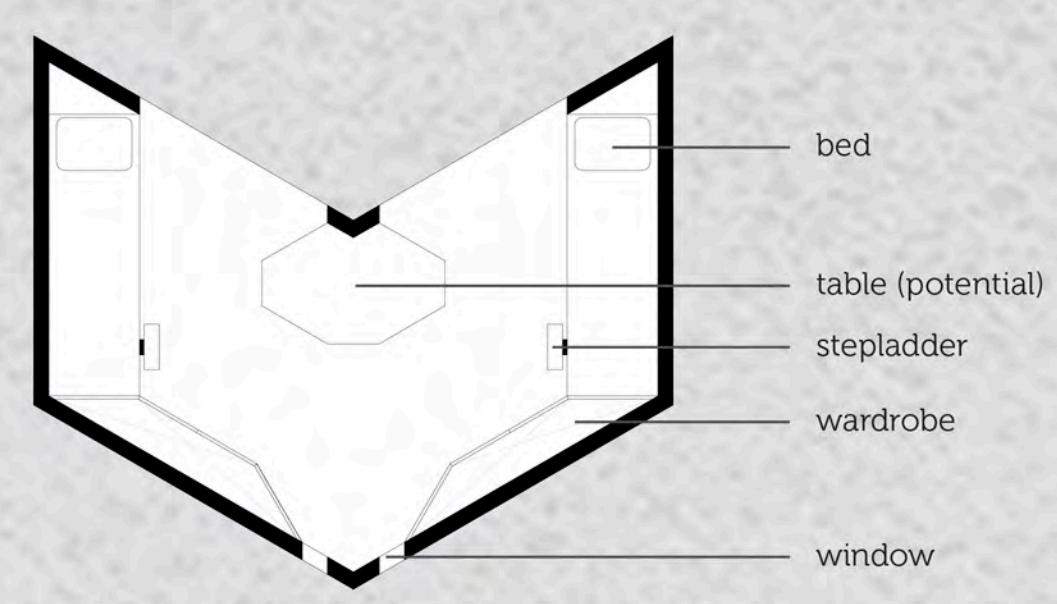
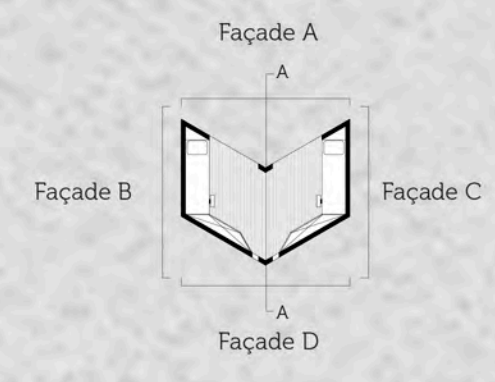


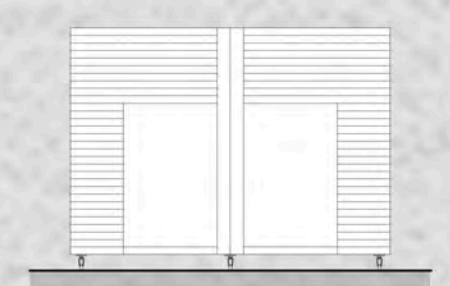
Main composition



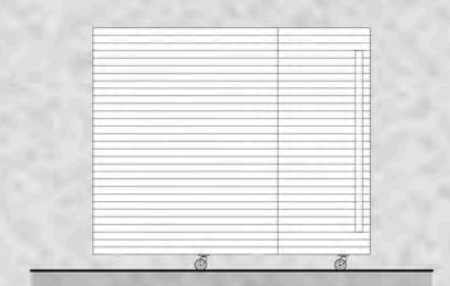
Plan _ scale 1:50



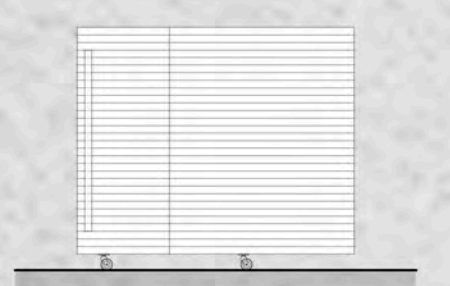
Section A-A _ scale 1:100



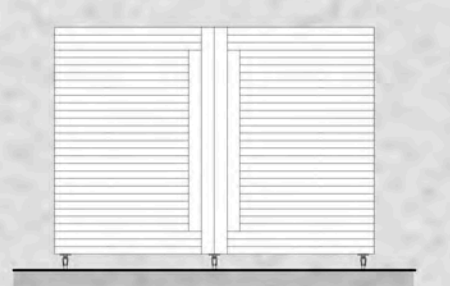
Façade A _ scale 1:100



Façade B _ scale 1:100



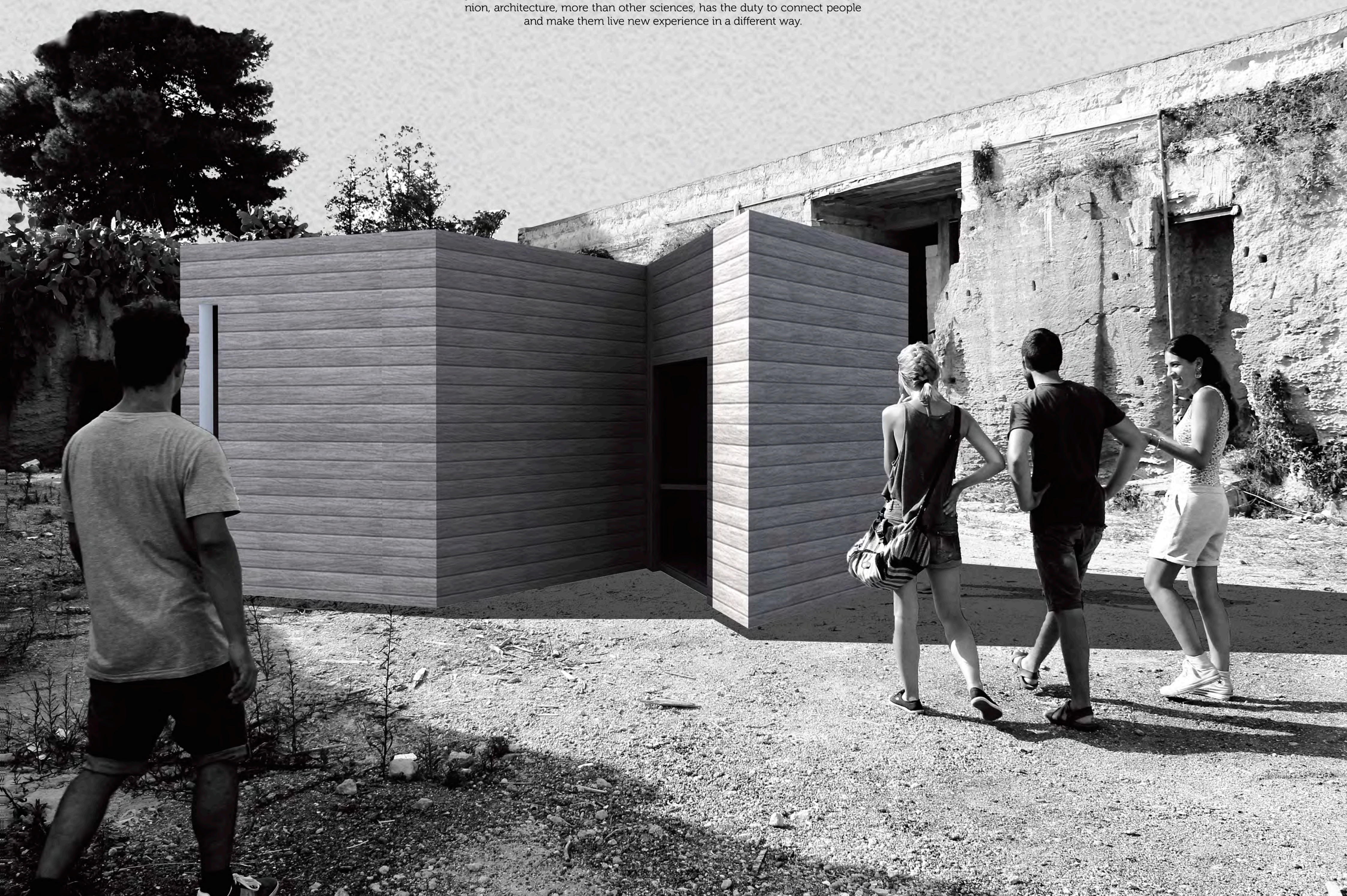
Façade C _ scale 1:100

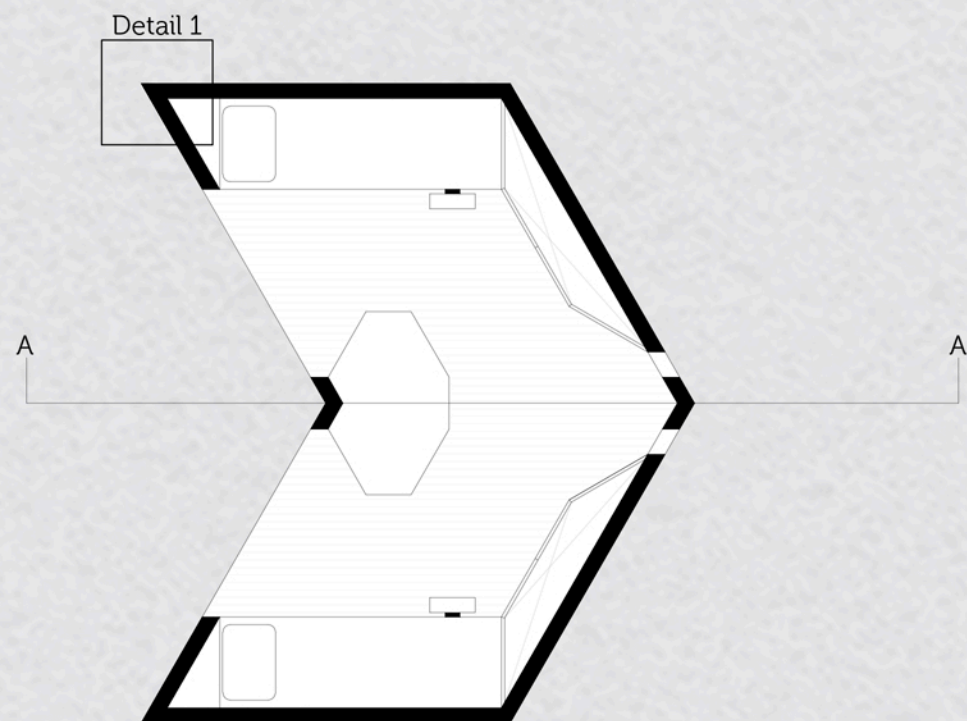


Façade D _ scale 1:100

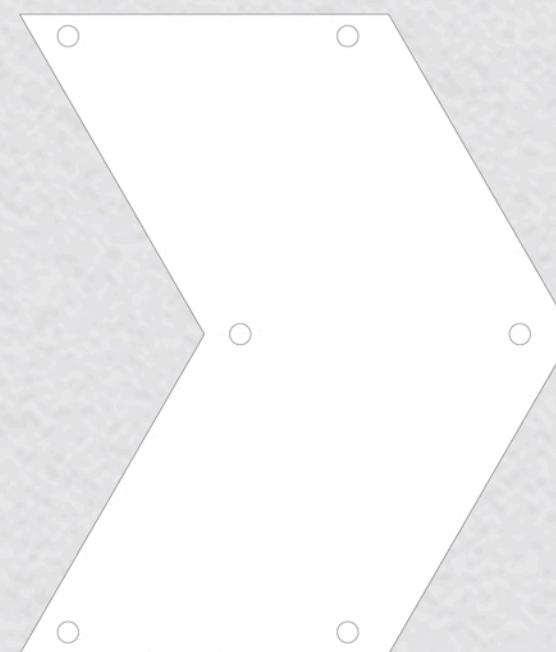
BOND

“BOND” is devised to respond to needs of flexibility, mobility, disassemblability and efficiency. This architecture, as his name suggests, wants to bond together the people that are living it, even in a quiet moment as the night. “Work together” means to create bonds and links between people from everywhere and with different culture and by this idea we imagined to create an element that is linearly repeatable and always accessible, allowing guests to share their sleeping moments. The BOND’s shapes permits to hold 4 beds and 2 big wardrobes in each modular element. Furthermore, the same shape can easily create a chain of elements, which allows the guests to share it. About this, as far as we are concerned, it’s really important to share all your time with people that are living in your same place (in this case the tuff mine) and who are doing your same activities. This is the main reason of the name we chose. In our opinion, architecture, more than other sciences, has the duty to connect people and make them live new experience in a different way.

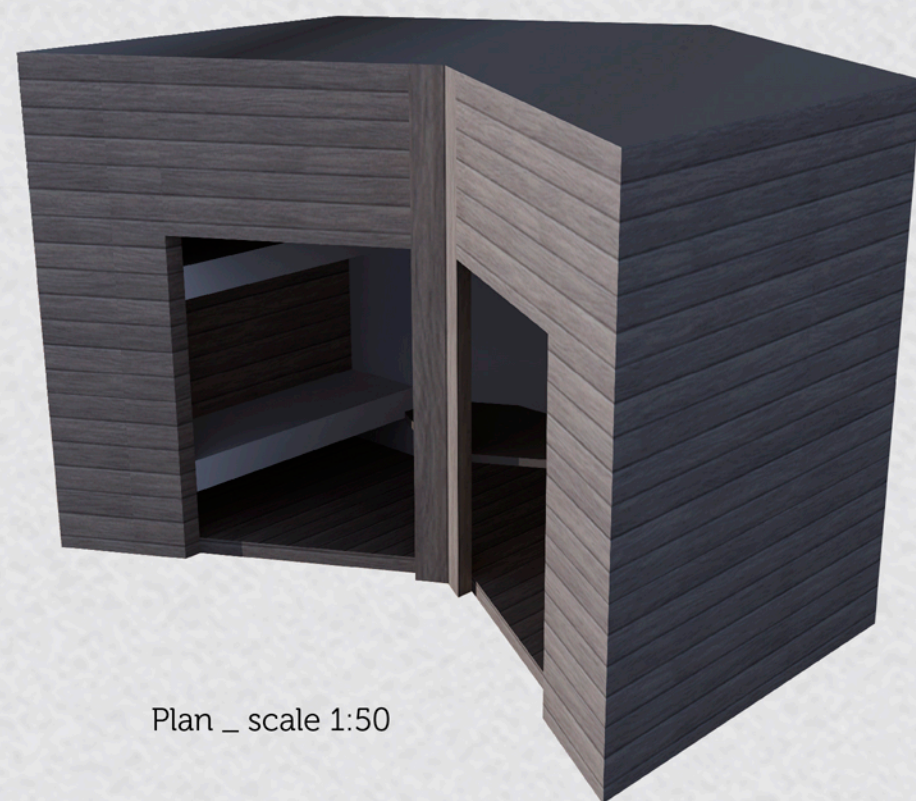




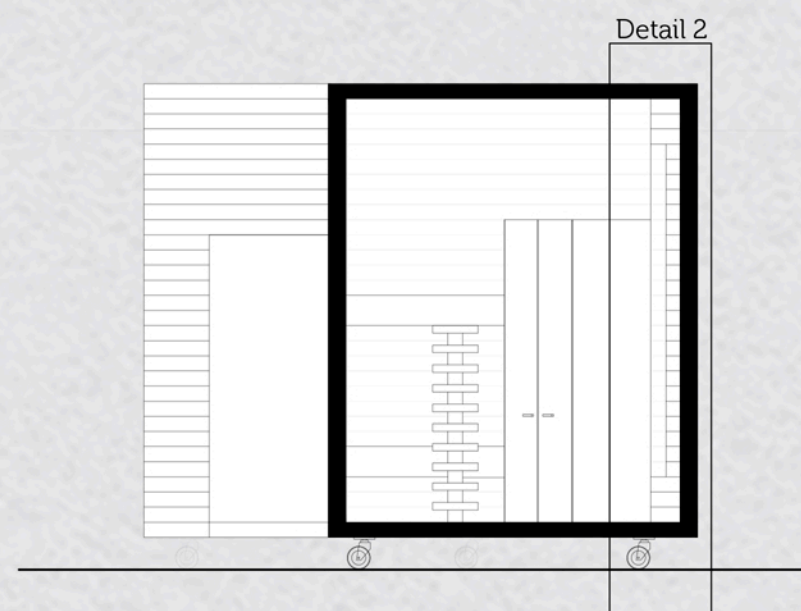
Plan _ scale 1:50



Wheels position _ scale 1:50



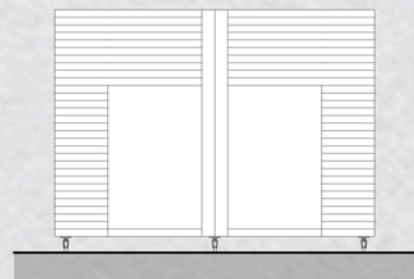
Plan _ scale 1:50



Section A-A _ scale 1:50



Main composition



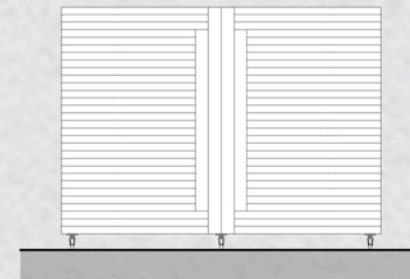
Façade A _ scale 1:100



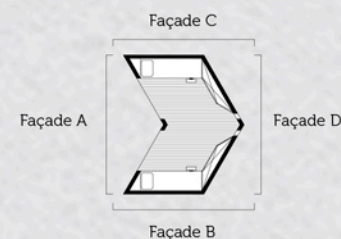
Façade B _ scale 1:100



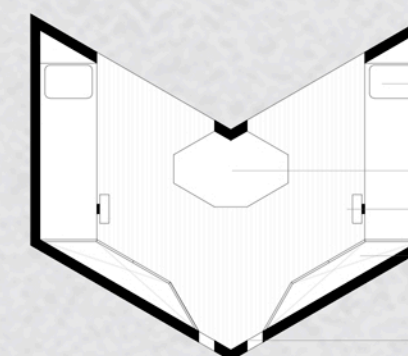
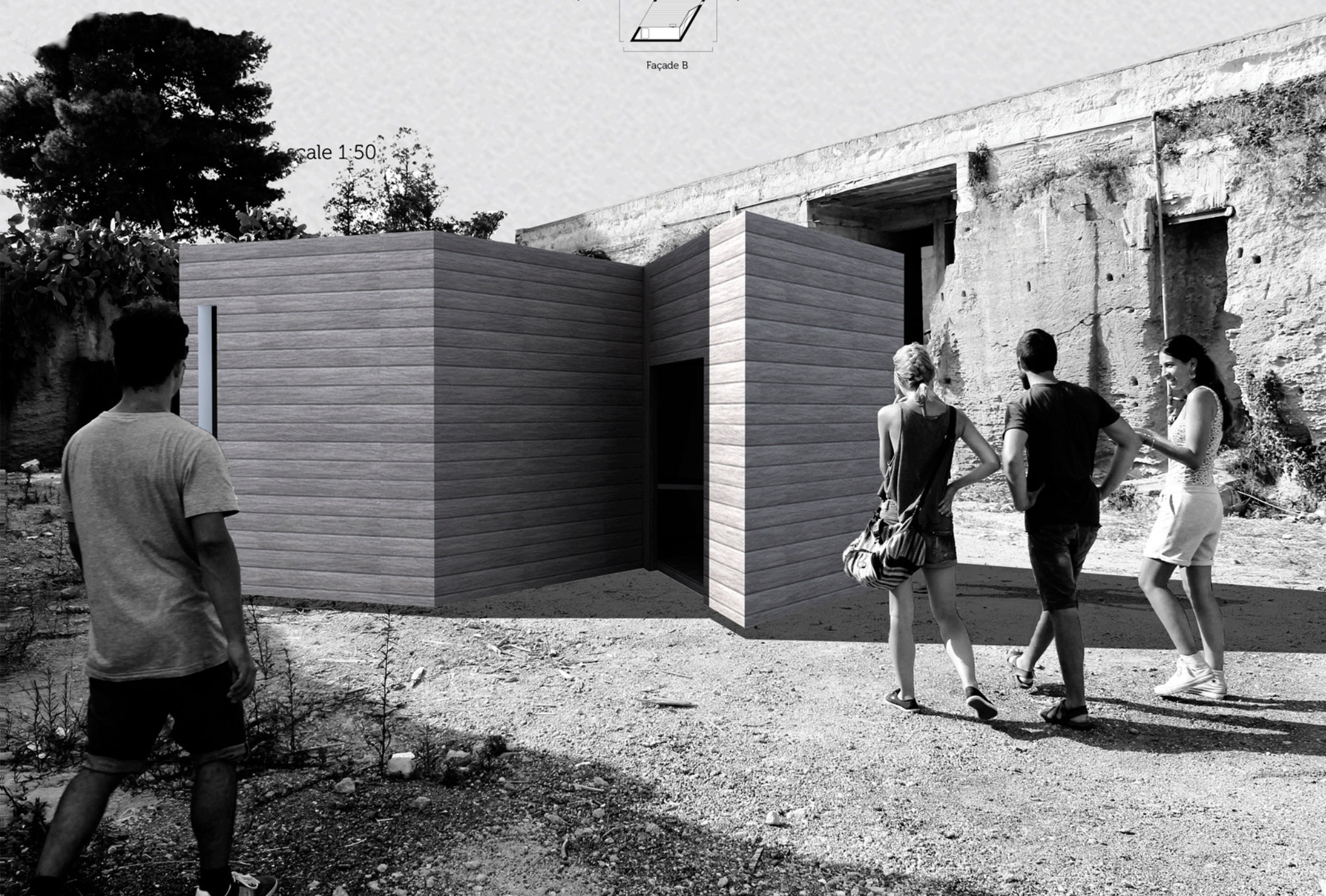
Façade C _ scale 1:100



Façade D _ scale 1:100

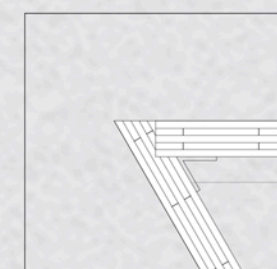


scale 1:50



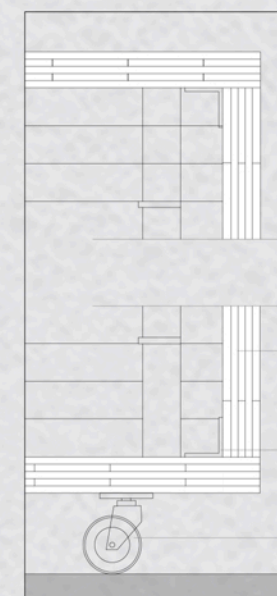
bed
table (potential)
stepladder
wardrobe
opening

Detail 1_1:20



5 xlam panels (thickness 19 mm)
steel "L" clamp (connection wall-wall)

Detail 2_1:20



5 xlam panels (thickness 19 mm)
steel "L" clamp (connection floor-wall)
wheel

Giuria

The project named "BOND" is devised in order to respond to needs of flexibility, mobility, disassemblability and efficiency.

This architecture, as his name suggests, wants to bond together the people that are living it, even in a quiet moment as the night.

"Work together" means to create bonds and links between people from everywhere and with different culture and by this idea we imagined to create an element that is linearly repeatable and always accessible, allowing guests to share their sleeping moments.

The BOND's shapes permits to hold 4 beds and 2 big wardrobes in each modular element. Furthermore, the same shape can easily create a chain of elements which allows the guests to share their space to sleep. Because of this, as far as we are concerned, it's really important to share all your time with people that are living in your same place (in this case the tuff mine) and who are doing your same activities. This is the main reason of the name we chose. In our opinion, architecture, more than other sciences, has the duty to connect people and make them live new experience in a different and always better way.

About the modular system, when the BOND modules are put side by side, as it is possible to see in the panels (even if the solutions of connection between them are unlimited), they create a linear housing system with a double entrance at the extremities of the system. There are no window fixtures, in order to make the structure lighter, so it could be good the use of light curtains that allow a good ventilation, considering that the houses will host people during the hottest period in Sicily.

Every module contains 2 bunk beds and 2 wardrobes. The 2 little openings are designed to shade the space inside (because of its sleeping function), protecting from the strong Sicilian sun during the period and allowing the circulation of air in the rooms.

The building is thought to be built in XLAM, wooden panels made by crossed wooden layers. These panels are made by several layers, superimposed and glued together in order to have a each layer turned of 90 degree. The panels suggested for BOND are made by 5 layers, but it exists even smaller, for a minimum of 3 layers. Moreover the XLAM gives flat structural elements that, when linked together, allow to built three-dimensional supporting structures.

For a easier mobility, BOND has six wheels which give stability at the house and allow the users to move it without problem. the connection between several element increases the stability of the system during windy events.

Rete

"BOND" is devised to respond to needs of flexibility, mobility, disassemblability and efficiency. This architecture, as his name suggests, wants to bond together the people that are living it, even during the night. "Work together" means to create bonds and links between people from everywhere and with different culture and by this idea we imagined to create an element that is linearly repeatable and always accessible, allowing guests to share their sleeping moments.

BOND's shapes permits to hold 4 beds and 2 big wardrobes in each modular element. Furthermore, the same shape can easily create a chain of elements, which allows the guests to share it. About this, as far as we are concerned, it's really important to share all your time with people that are living in your same place (in this case the tuff mine) and who are doing your same activities. In our opinion, architecture, more than other sciences, has the duty to connect people and make them live new experience in a different way.